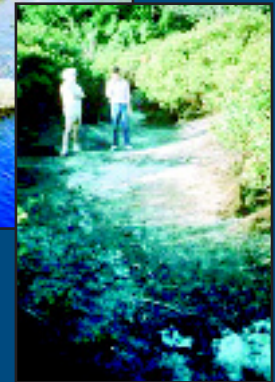
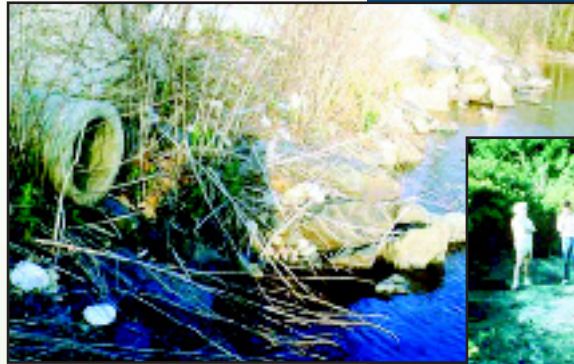




Planning for Growth and Watershed Protection in the Ipswich River Watershed

Ipswich River Watershed Association

The Ipswich River drains a 155 square-mile mostly rural watershed area north of Boston, Massachusetts, eventually draining into Ipswich Bay and Plum Island Sound after a 45-mile journey through 22 towns. The river suffers from low-flow and no-flow conditions and even flow reversal, due to public water supply withdrawals from groundwater and surface water, natural low-flow, and export of wastewater outside the basin, according to a U.S. Geological Survey report. As a result, the river is listed under Section 303(d) of both the State and Federal Clean Water Acts. American Rivers designated the Ipswich River as one of the 20 most threatened rivers in the country, based on water withdrawals, development, and pollution.



Horsley Witten Group was retained by the Ipswich River Watershed Association to develop a Watershed Management Plan to restore flow, assist in forming a Watershed Management Council incorporating river stakeholders, build consensus and support for restoring flow, conduct a Resource Economics study of the costs and benefits of restoring flow, develop a stakeholder survey to help assess and recognize economic recreational values of the river, model hydrological alternatives for remediation, and provide public outreach concerning the values of a restored river. Numerous public meetings and stakeholder meetings were held, involving municipal water officials, agencies, regulators, user groups, residents, scientists, and others.

Client: Ms. Kerry Mackin
Ipswich River Watershed Association
978-887-8404

HW Contact:
Scott Horsley

www.horsleywitten.com

- Civil & Environmental Engineering
- Wetlands Management
- Coastal Management
- Hydrogeology & Water Supply
- Stormwater Management
- Wastewater Management
- Site Assessment & Remediation
- Land Use Planning
- Education & Outreach



Sandwich, MA

90 Route 6A
Sandwich, MA 02563
tel: 508-833-6600

Newburyport, MA

21 Pleasant Street, Suite 216
Newburyport, MA 01950
tel: 978-499-0601

Providence, RI

370 Ives Street
Providence, RI 02906
tel: 401-272-1717