



# Water System Master Plan Update

## Town of Plymouth, Massachusetts

The Horsley Witten Group, Inc. (HW) was retained by the Town of Plymouth, Massachusetts to create a Water System Master Plan, which was completed in cooperation with Wright-Pierce, Inc. The Plan maps a comprehensive picture of the current state of the entire water system, including both strengths and weaknesses. It assesses all components of the water system, including well sites, growth and expansion potential, pumping stations and infrastructure, distribution system, water quality, water demand, water conservation, administrative controls, bylaws and regulations and financial analyses.

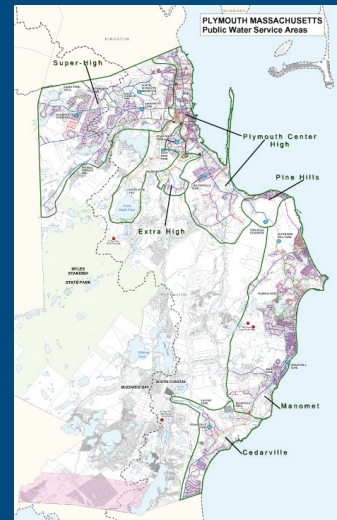
HW's main focus areas in the project were the evaluation of potential new water source areas and the improvement of relevant bylaws and regulations. One novel aspect to the new source evaluation of the Plan has been the incorporation of concerned stakeholders in the process in order to ensure that water supply needs are balanced against potential environmental impacts to sensitive water resources. The new source evaluation began with a GIS-based assessment of land use limitations and opportunities in order to limit those potential water supply sites to those with the greatest opportunity and the least limitation from environmental, permitting, and water quality viewpoints. Detailed numerical groundwater modeling was subsequently used to evaluate the potential impacts and probable zones of contribution for targeted new source supply areas. This two-step screening process ensures that costly drilling and exploratory programs are only conducted at those sites with the greatest likelihood of producing abundant, high quality water with the lowest possible environmental impact and the most straightforward permitting path.

Client: Paul Wohler  
Town of Plymouth  
DPW Water Superintendent  
508-747-1620

HW Contact:  
Neal Price

[www.horsleywitten.com](http://www.horsleywitten.com)

- Civil & Environmental Engineering
- Wetlands Management
- Coastal Management
- Hydrogeology & Water Supply
- Stormwater Management
- Wastewater Management
- Site Assessment & Remediation
- Land Use Planning
- Education & Outreach



### Sandwich, MA

90 Route 6A  
Sandwich, MA 02563  
tel: 508-833-6600

### Newburyport, MA

30 Green Street  
Newburyport, MA 01950  
tel: 978-499-0601

### Providence, RI

370 Ives Street  
Providence, RI 02906  
tel: 401-272-1717