



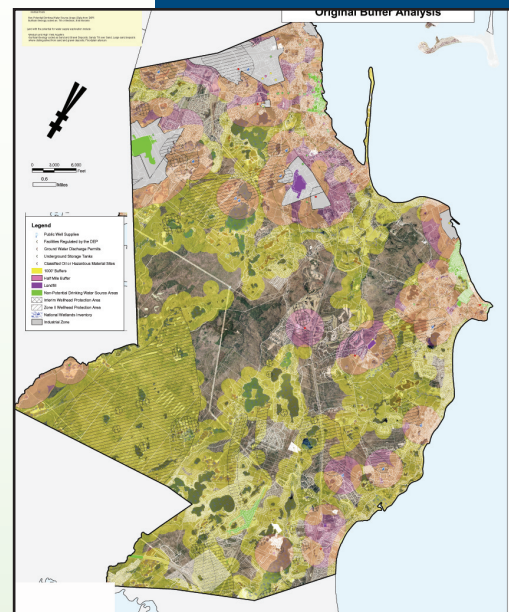
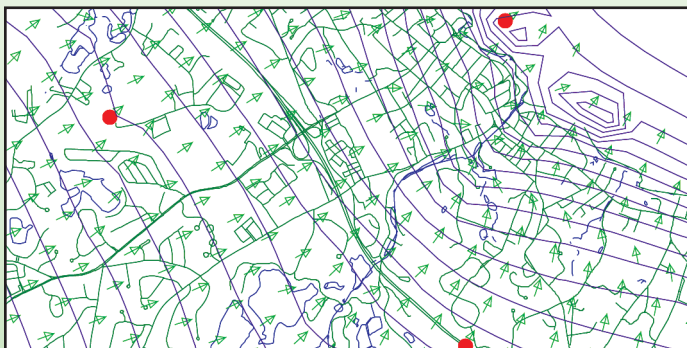
# Plymouth Municipal Water Supply Exploration

## Plymouth, Massachusetts

In order to prepare for future population growth, the Town of Plymouth, Massachusetts selected the Horsley Witten Group, Inc. (HW) to conduct a field-based exploration of potential water supply locations.

The locations were selected as part of an earlier desktop evaluation (also conducted by HW) that used GIS data layer analysis and groundwater modeling to identify locations with the fewest possible conflicts from land use and environmental impact perspectives. This project was conducted in cooperation with the Nature Conservancy in order to best ensure that the selected sites posed the least possible risk to sensitive water resource areas.

The field program at the focus of this project involved initial test drilling and aquifer testing to identify which of the potential well sites would exhibit the most promise as future water supply sites.



[www.horsleywitten.com](http://www.horsleywitten.com)

- Civil & Environmental Engineering
- Wetlands Management
- Coastal Management
- Hydrogeology & Water Supply
- Stormwater Management
- Wastewater Management
- Site Assessment & Remediation
- Land Use Planning
- Education & Outreach



### Sandwich, MA

90 Route 6A  
Sandwich, MA 02563  
tel: 508-833-6600

### Newburyport, MA

30 Green Street  
Newburyport, MA 01950  
tel: 978-499-0601

### Providence, RI

370 Ives Street  
Providence, RI 02906  
tel: 401-272-1717

Client: Paul Wohler  
Plymouth Water Department  
Town of Plymouth  
508-747-1620

HW Contact:  
Neal Price