



Potomac River Drinking Water Source Protection Partnership Training and Tabletop Exercise

U.S. Environmental Protection Agency

The U.S. Environmental Protection Agency (EPA) retained the Horsley Witten Group, Inc. (HW) to design, plan, and facilitate training and tabletop exercise workshops, bringing together key National Capitol Region (NCR) water sector and other first responder personnel to discuss a hypothetical oil spill scenario. In cooperation with the Potomac Drinking Water Source Protection Partnership, EPA Region 3, and the U.S. Department of Transportation, HW designed these two one-day workshops to:

- Provide response plan training;
- Enhance coordination and communication between multiple agency responders;
- Improve understanding of roles and responsibilities; and
- Allow participants to discuss steps to be taken now to better prepare for a future water system-specific emergency incident.

HW coordinated and ensured the logistical arrangements for both workshops, including the determination of a training location, the development of an agenda and a promotional flyer, the promotion of attendance, the invitation of the appropriate local, state, and federal officials, and the development and hosting of a registration website for participants.

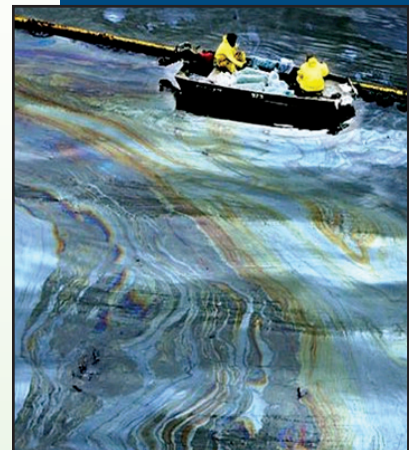
For the training session, HW developed appropriate materials on Emergency Response Plans (ERPs) and how to implement these plans. For the tabletop exercise session, HW developed a student manual based on a realistic spill scenario consistent with Homeland Security Exercise and Evaluation Program (HSEEP) guidelines and representative of the latest spill prediction models. HW produced and distributed participant hand-outs / folders for both sessions, and prepared after-action reports based on participants' input and observations. Each session was attended by over 90 participants from varying sectors and agencies including water utilities, fire departments, emergency services, state drinking water primacy agencies, public health agencies, and the private sector.

Client Contact:
Patti Kay Wisniewski
EPA Region 3
215-814-5668

HW Contact:
Mark Nelson, P.G.

www.horsleywitten.com

- Civil & Environmental Engineering
- Wetlands Management
- Coastal Management
- Hydrogeology & Water Supply
- Stormwater Management
- Wastewater Management
- Emergency Response
- Site Assessment & Remediation
- Land Use Planning
- Education & Outreach



Sandwich, MA

90 Route 6A
Sandwich, MA 02563
tel: 508-833-6600

Newburyport, MA

30 Green Street
Newburyport, MA 01950
tel: 978-499-0601

Providence, RI

370 Ives Street
Providence, RI 02906
tel: 401-272-1717